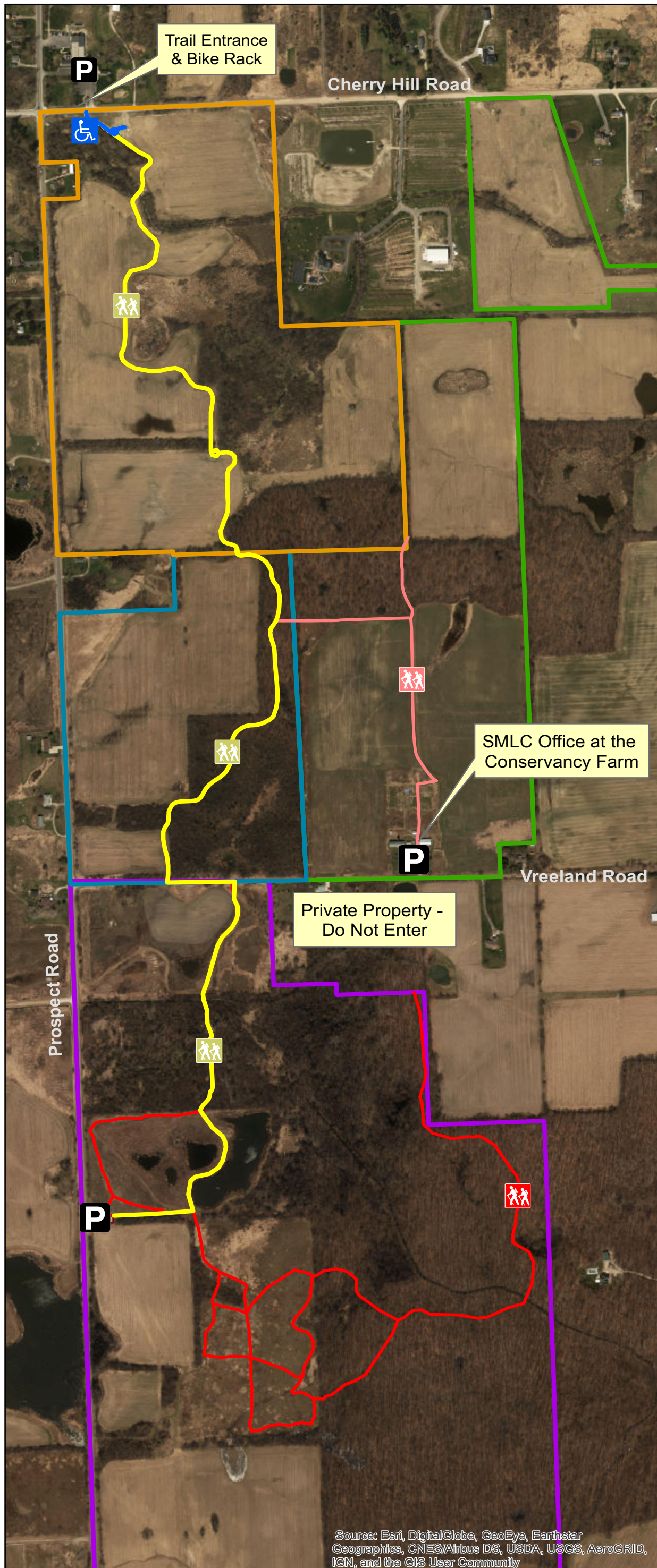




Superior Greenway TRAILS MAP



Superior Greenway

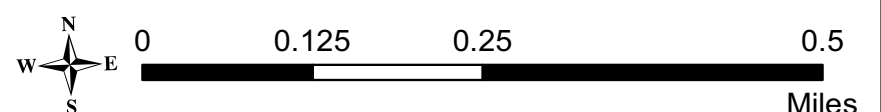
The Superior Greenway Nature Trail

The Superior Greenway Nature Trail (SGNT) begins with an ADA accessible scenic overlook area at SMLC's Jack R. Smiley Nature Preserve and meanders across two streams through a landscape of active farmland and wetland restoration projects. Shortly after entering Washtenaw County's Meyer Preserve, a spur trail leads into the grassland at the Conservancy Farm and to SMLC headquarters. After weaving through the Meyer woods, the SGNT comes out on Vreeland Rd. where it makes a short jog along the road and enters SMLC's LeFurge Woods Nature Preserve. A short stretch of shrubby habitat leads into a gorgeous wetland and eventually to the parking area and wetland overlook area. From there, hikers can venture from the SGNT to other trails at LeFurge Woods. The SGNT is approximately **1.75 miles** in length.

Trail users can access the Trail from Superior Township Hall, Vreeland Road, and the LeFurge Woods Nature Preserve parking area on N. Prospect Road. The trail is open dawn until dusk. Dogs are allowed only on a leash, please pick up after them. No horses or bicycles are allowed on the trail.

Legend

- Superior Greenway Nature Trail trailhead
- Superior Greenway Nature Trail
- Conservancy Farm Trails
- LeFurge Woods Trails
- Jack R. Smiley Nature Preserve (SMLC)
- Meyer East Preserve (Washtenaw County)
- Conservancy Farm (SMLC)
- LeFurge Woods Nature Preserve (SMLC)
- P** Parking



Source: Esri, DigitalGlobe, GeoEye, Earthstar Geographics, CNES/Airbus DS, USDA, USGS, AeroGRID, IGN, and the GIS User Community